



# STONEWARE COMBO

## SW-196 Sand Dollar

## Cone 6



Technique was achieved by brushing on two (2) layers of base glaze (SW-196 Sand Dollar). Then apply two (2) layers of top glaze, letting glazes dry between coats.

	 SW-133 Copper Ore <b>over</b> SW-196 Sand Dollar		 SW-135 Wintergreen <b>over</b> SW-196 Sand Dollar		 SW-146 Aurora Green <b>over</b> SW-196 Sand Dollar
	 SW-151 Olive Float <b>over</b> SW-196 Sand Dollar		 SW-165 Lavender Mist <b>over</b> SW-196 Sand Dollar		 SW-168 Coral Sands <b>over</b> SW-196 Sand Dollar
	 SW-173 Amber Quartz <b>over</b> SW-196 Sand Dollar		 SW-182 Antique Brass <b>over</b> SW-196 Sand Dollar		 SW-190 Passion Flower <b>over</b> SW-196 Sand Dollar
	 SW-191 Peppered Plum <b>over</b> SW-196 Sand Dollar		 SW-192 Amaryllis <b>over</b> SW-196 Sand Dollar		 SW-195 Riptide <b>over</b> SW-196 Sand Dollar

Vases shown are fired to Cone 6 on White Stoneware body.



MaycoColors.com

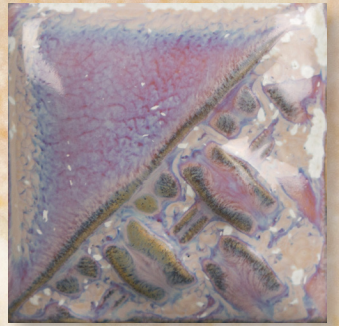




# STONEWARE COMBO

## SW-196 Sand Dollar

### Cone 10 reduction



Technique was achieved by brushing on two (2) layers of base glaze (SW-196 Sand Dollar). Then apply two (2) layers of top glaze, letting glazes dry between coats.

SW-133 Copper Ore <b>over</b> SW-196 Sand Dollar		SW-135 Wintergreen <b>over</b> SW-196 Sand Dollar		SW-146 Aurora Green <b>over</b> SW-196 Sand Dollar	
SW-151 Olive Float <b>over</b> SW-196 Sand Dollar		SW-165 Lavender Mist <b>over</b> SW-196 Sand Dollar		SW-168 Coral Sands <b>over</b> SW-196 Sand Dollar	
SW-173 Amber Quartz <b>over</b> SW-196 Sand Dollar		SW-182 Antique Brass <b>over</b> SW-196 Sand Dollar		SW-190 Passion Flower <b>over</b> SW-196 Sand Dollar	
SW-191 Peppered Plum <b>over</b> SW-196 Sand Dollar		SW-192 Amaryllis <b>over</b> SW-196 Sand Dollar		SW-195 Riptide <b>over</b> SW-196 Sand Dollar	

Vases shown are fired to Cone 10 reduction on White Stoneware body.



MaycoColors.com

