



STONEWARE COMBO

SW-197 Fossil Rock

Cone 6



Technique was achieved by brushing on two (2) layers of base glaze (SW-197 Fossil Rock). Then apply two (2) layers of top glaze, letting glazes dry between coats.

SW-129 Copper Float over SW-197 Fossil Rock		SW-135 Wintergreen over SW-197 Fossil Rock		SW-138 Lemon Meringue over SW-197 Fossil Rock	
SW-141 White Matte over SW-197 Fossil Rock		SW-146 Aurora Green over SW-197 Fossil Rock		SW-151 Olive Float over SW-197 Fossil Rock	
SW-182 Antique Brass over SW-197 Fossil Rock		SW-190 Passion Flower over SW-197 Fossil Rock		SW-191 Peppered Plum over SW-197 Fossil Rock	
SW-192 Amaryllis over SW-197 Fossil Rock		SW-195 Riptide over SW-197 Fossil Rock		SW-252 Blue Opal over SW-197 Fossil Rock	

Vases shown are fired to Cone 6 on White Stoneware body.



MaycoColors.com

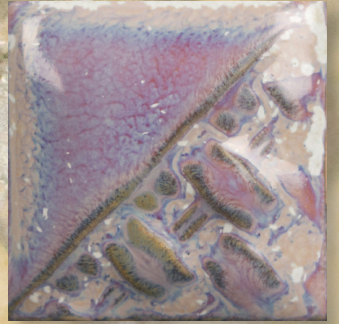




STONEWARE COMBO

SW-197 Fossil Rock

Cone 10 reduction



Technique was achieved by brushing on two (2) layers of base glaze (SW-197 Fossil Rock). Then apply two (2) layers of top glaze, letting glazes dry between coats.

		<p>SW-129 Copper Float over SW-197 Fossil Rock</p>			<p>SW-135 Wintergreen over SW-197 Fossil Rock</p>			<p>SW-138 Lemon Meringue over SW-197 Fossil Rock</p>
		<p>SW-141 White Matte over SW-197 Fossil Rock</p>			<p>SW-146 Aurora Green over SW-197 Fossil Rock</p>			<p>SW-151 Olive Float over SW-197 Fossil Rock</p>
		<p>SW-182 Antique Brass over SW-197 Fossil Rock</p>			<p>SW-190 Passion Flower over SW-197 Fossil Rock</p>			<p>SW-191 Peppered Plum over SW-197 Fossil Rock</p>
		<p>SW-192 Amaryllis over SW-197 Fossil Rock</p>			<p>SW-195 Riptide over SW-197 Fossil Rock</p>			<p>SW-252 Blue Opal over SW-197 Fossil Rock</p>



Vases shown are fired to Cone 10 reduction on White Stoneware body.

MaycoColors.com

